



Commercial HEAVY 430

Architectural Shade Fabric

OUTDOOR RECREATION AREAS

CAR PARK STRUCTURES

SPORTING VENUES



Commercial

HEAVY 430

Architectural Shade Fabric



Commercial Heavy 430 is the newest addition to GALE Pacific’s Architectural shade fabric range. It was engineered specifically to withstand extreme weather conditions on large scale tension structures. It features superior biaxial strength and load bearing performance for optimum shape and tensioning endurance.

Made from 100% round monofilament and designed using a patent pending intertwining knit pattern.

Commercial Heavy 430 offers up to 94% UV protection and is available in 13 popular colours, making it easier than ever to complement existing design elements and colour schemes.

Features	Benefits
Provides UV block up to 94%	Reduces sun exposure
Full 15 year warranty against UV degradation	Peace of mind
Made from strong HDPE 100% recyclable fabric	Won't rot or absorb moisture
Stentered (heat-set)	Virtually eliminates any possibility of shrinking once installed and provides ease of fabrication
100% Lead and Phthalate free for a healthier environment	Healthier environment
Greenguard® and Oeko-Tex® certified gives confidence in	Confidence in operational quality assurance
Engineered in Australia to meet the harsh climate conditions	Meets harsh environmental conditions

Applications

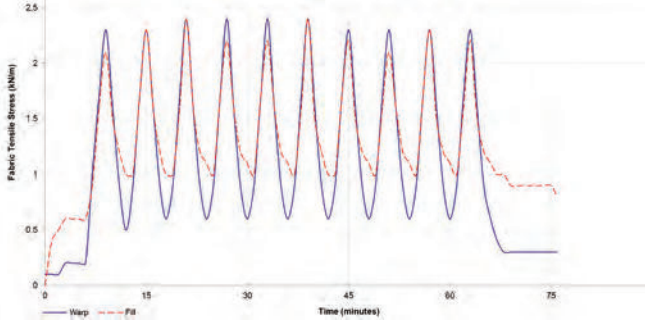
- Large tension structures
- Large awnings
- Car Park structures

Usage Instructions

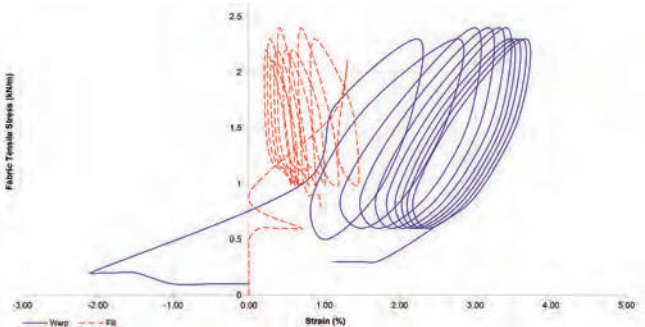
Do not use against flames.

Contact with organic solvents, halogens or highly acidic substances may reduce the service life of the fabric and void the warranty.

Load Diagram



Biaxial Stretch Test





Material

Yarn	Knitted UV-stabilised HDPE
Construction	100% Monofilament
Pattern	Lock-stitch knitted
Temperature range	-30°C to +75°C
Roll length	40m
Roll width	3m width (unfolded)

Properties

Nominal fabric mass (AS 2001.2.13)	430 gsm ± 20
Approximate thickness	1.6mm

Performance

Tensile Strength-Warp	2000 N/50mm
Tensile Strength-Weft	1700 N/50mm
(AS 2001.2.3.2)	
Wing Tear – Warp (mean)	321 N
Wing Tear – Weft (mean)	253 N
(AS 2001.2.10)	
Bursting Force (mean)	2130 N
(AS 2001.2.19)	

Flammability

(AS1530.2)	
Flammability Index (range0-100)	34

Lead & Phthalate Tests

(CPSIA Section 101(a)(2))	
Lead not detected	PASS
(CPSIA Section 108)	
Phthalate not detected	PASS

Suggested Specification

Shade cloth fabric shall be compliant to Australian standard AS 4174 and shall be GALE Commercial Heavy 430 knitted with HDPE monofilament offering a UV block up to 94%.

Colour	Code	Nom Width*	Length**	Cover Factor	Shade Factor	Av % Trans	Av% UVR Trans	Av PAR Trans	%UVR Block	PF
Aquatic Blue	484323	3m	40m	91.2	89.7	10.3	8.9	11.0	91.1	11.6
Black	484422	3m	40m	94.3	94.3	5.7	5.7	5.7	94.3	17.6
Brunswick Green	484361	3m	40m	92.5	92.4	7.6	7.6	7.5	92.4	13.5
Charcoal	484460	3m	40m	90.4	90.4	9.6	9.6	9.6	90.4	10.7
Deep Ochre	484385	3m	40m	94.9	94.6	5.4	5.1	5.3	94.9	21.8
Desert Sand	484309	3m	40m	93.0	87.1	12.9	7.1	13.4	92.9	14.7
Emerald	485887	3m	40m	90.3	88.8	11.2	9.8	11.0	90.2	10.3
Natural	484347	3m	40m	92.3	79.1	20.9	7.9	23.2	92.1	14.4
Navy	484446	3m	40m	90.8	90.3	9.7	9.3	9.9	90.7	10.9
Red	484484	3m	40m	91.4	80.8	19.2	8.7	17.3	91.3	11.5
Steel Grey	484408	3m	40m	90.1	89.2	10.8	9.9	10.9	90.1	10.3
White	485863^	3m	40m	90.6	72.9	27.1	9.7	31.2	90.3	10.6
Yellow	485849	3m	40m	91.2	76.3	23.7	8.8	24.9	91.2	11.8

^ Available in made to order only, contact your GALE Pacific representative for lead time information

Approx. roll weight: 54kg

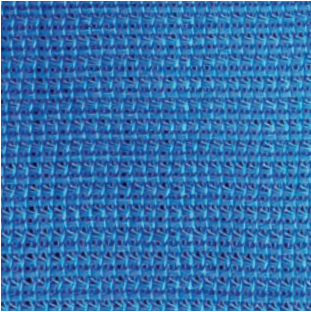
Approx. roll diameter: 0.30m

Core diameter: 35mm

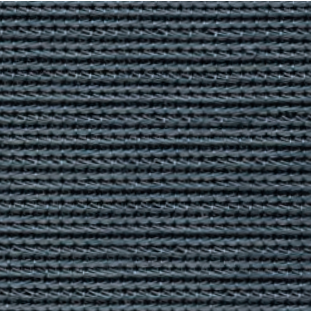
**Folded. **Roll.*
The above results are typical averages from independent testing and quality assurance testing and are not to be taken as a minimum specification nor as forming any contract between GALE Pacific and another party. Due to continuous product improvement product specifications are subject to alteration without notice.
As the use and disposal of this product are beyond GALE Pacific’s control, regardless of any assistance provided without charge, GALE Pacific assumes no obligation or liability for the suitability of its products in any specific end use application. It is the customer’s responsibility to determine whether GALE Pacific’s products are appropriate for the specific application and complies with any legal & patent regulations.
The calculated protection factor is for the material only and does not account for the effect of indirect UVR when situated at a distance from the persons being protected.



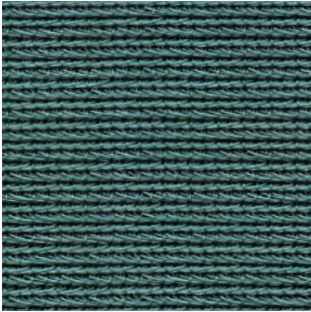
Colours Available



Aquatic Blue 484323
91.1% UVR Block



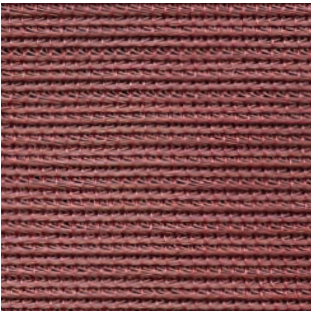
Black 484422
94.3% UVR Block



Brunswick Green 484361
92.4% UVR Block



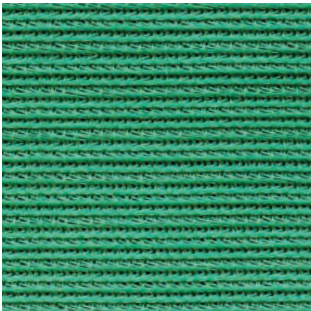
Charcoal 484460
90.4% UVR Block



Deep Ochre 484385
94.9% UVR Block



Desert Sand 484309
92.9% UVR Block



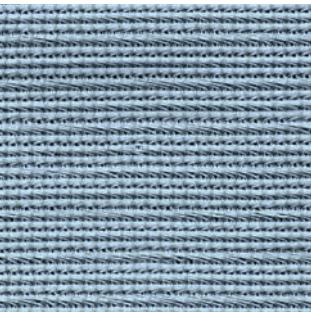
Emerald 485887
90.2% UVR Block



Natural 484347
92.1% UVR Block



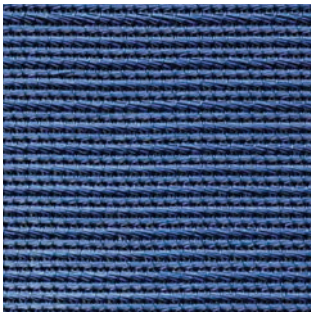
Red 484484
91.3% UVR Block



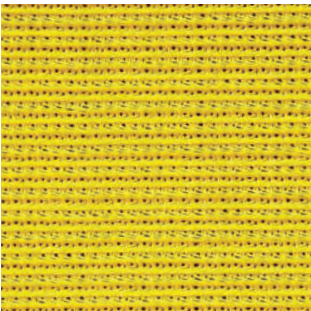
Steel Grey 484408
90.1% UVR Block



White 485863^
90.3% UVR Block



Navy Blue 484446
90.7% UVR Block



Yellow 485849
91.2% UVR Block

^ Available in made to order only, contact your GALE Pacific representative for lead time information

Please note, due to the limitations of the printing process, colours may not represent the true colour

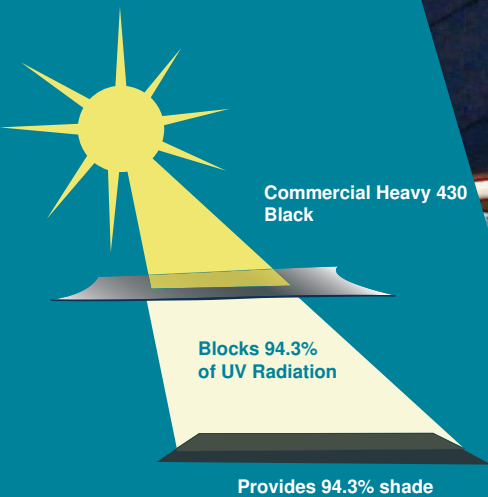
GALE Pacific architectural shade fabrics are designed to be strong and stable for use in architectural, outdoor, large-scale tension structures. All GALE Pacific architectural shade fabrics offer the ultimate combination of maximum sun protection, strength and durability to ensure maintenance-free, long-life performance.

GALE Pacific architectural fabrics are 100% lead and phthalate free and the first architectural shade cloth in the world to be granted Oeko-Tex Standard 100 and Greenguard Certification.

UVR Block & PF Ratings

All GALE Pacific shade fabrics have been fully tested according to AS4174 by the Australian Radiation Protection & Nuclear Safety Agency and feature the highest PF results available to deliver the highest level of UVR protection of any commercial shade cloth. Commercial Heavy 430 shade fabric ranges up to 94.3% UVR block which is considered as “excellent protection” under guidelines set by Australia’s Sun Smart and the Cancer Council.

The % UVR block relates to the ability of the shadecloth to reflect or absorb UVR within the 290nm to 400nm range of the spectrum. Heightened exposure to UVR has been shown to increase the rates of skin cancer. Therefore, the percentage of UVR block is an important factor when selecting shadecloth designed to protect people.



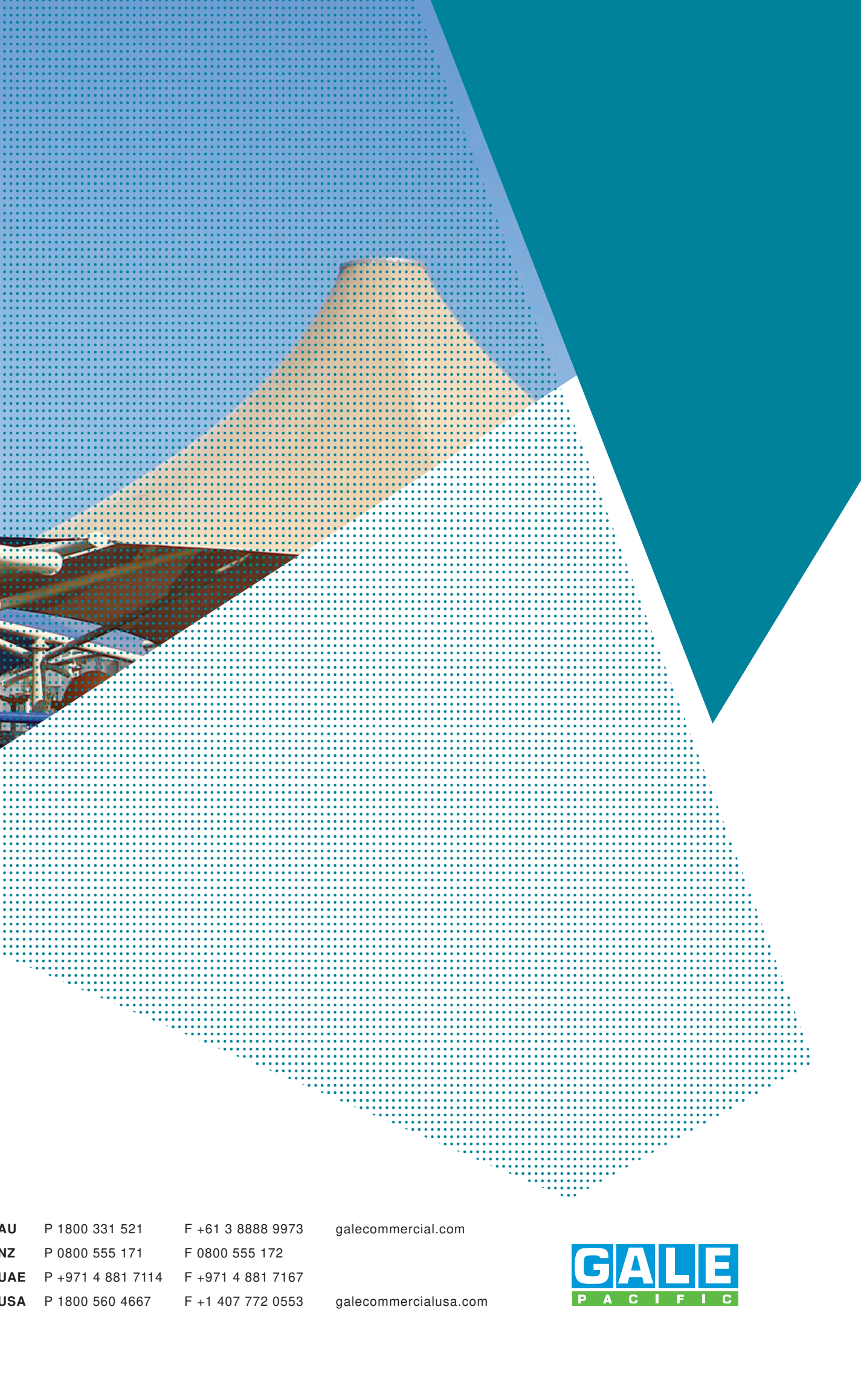
Commercial Heavy 430 is OEKO-TEX® Standard 100 and Greenguard children and school certified.

As the demand for healthy, sustainable products continues to expand, consumers and building industry professionals increasingly demand substantiation of product sustainability claims and rely on trustworthy third-party certifiers to guide purchasing and specification decisions. GREENGUARD & Oeko-Tex Standard 100 Certification provides the market with solutions and resources to ensure healthier environments, and provides manufacturers with credible tools to legitimize and promote their sustainability.

The GREENGUARD and Oeko-Tex Standard 100 Certifications set stringent limits for products to achieve in several key areas such as:

- Limiting Volatile Organic Compound (VOC) content
- Lowering formaldehyde emissions
- Lowering lead and phthalate content





AU	P 1800 331 521	F +61 3 8888 9973	galecommercial.com
NZ	P 0800 555 171	F 0800 555 172	
UAE	P +971 4 881 7114	F +971 4 881 7167	
USA	P 1800 560 4667	F +1 407 772 0553	galecommercialusa.com

GALE
P A C I F I C